

St John's Journal

13th February 2026

It has been another busy and eventful half term with so many activities and learning opportunities for our children to engage in. We go into the half term break looking forward to slowing down the pace, recharging and all being able to meet back again in school, after the holidays. We hope you have lots of quality time with your families and friends. Happy Half-term!

St John's Safeguarding Leads

Mr Rizzo – Principal
Mrs Godley – Vice Principal
Mrs Thackery – Business Manager

Inset days for 2026

Friday 24th July

Monday 27th July

Full calendar can be found on our website
<https://www.stjohnsworksop.co.uk/school-holidays-and-inset-days/>

Important Information

We have children in school with severe Egg and Nut allergies.

Please do not send these food items into school.

Thank you for your cooperation.

Dates for your diary 2025/26

Monday 16th – Friday 20th February – Half Term Holiday

Thurs 26th February – Year 2 Trip to Sherwood Forest

Monday 2nd March – Year 4 Trip to Perlethorpe

Thursday 5th March – World Book Day

Tuesday 10th March – Parents' Evening

Thursday 19th March - Parents' Evening

Monday 30th March – Friday 10th April – Easter/End of Spring Term Holiday

Monday 13th April - Summer Term Begins

Tuesday 14th April – Year 6 Trip to Holocaust Museum

Monday 4th May – Bank Holiday Monday

Monday 25th May – Friday 29th May – Half Term Holiday

St John's Journal

13th February 2026

Rainbow Rewards

Value of the Week is
Truth

F1 Curious Creators	Wynter and Grayson
F2 Enquirers	Hubert and Anella
F2 Inquisitors	Noah R and Florence A
Y1 Imagineers	Max and Safan
Y1 Inspectors	Everyone
Y2 Questioners	Beatrice and Ronnie
Y2 Searchers	Oscar and Alfie C
Y3 Adventurers	Finley and Fraser
Y3 Challengers	Belle and Alfie
Y4 Discoverers	Eadie and Jenson
Y4 Explorers	Jake and Phoebe
Y5 Inspirers	Logan and Naomi
Y6 Voyagers	Esme L and Jenson

House Attendance

This Week

Aderin	96.85%
Earhart	97.06%
Johnson	96.84%
Sharman	96.44%

Last Week

Aderin	95.11%
Earhart	97.1%
Johnson	95.26%
Sharman	95.86%



DIOCESE OF SOUTHWELL
& NOTTINGHAM
MULTI ACADEMY TRUST

St John's Journal

13th February 2026



ST JOHN'S
CHURCH OF ENGLAND ACADEMY

WORLD BOOK DAY 2026

THURSDAY 5TH MARCH

Just like last year, children are invited to come to school dressed as a word.



We will also be running a 'Bake a Cake' competition. Children may bring in a cake on the day related to their word or a book of their choice.

The cakes will be sold on the main playground at the end of the school day for £1 a slice. This will be cash only. We will not accept any card payments.

All proceeds raised will go towards buying new books for the children in school.

Uniform Expectations

Please can we remind you that we expect children to wear full uniform at all times, we will be making regular checks to ensure children have the correct items on and will be sending a message home to remind you if your child attends in incorrect items.

You can find a copy of our Uniform Policy on our website here:
<https://www.stjohnsworksop.co.uk/uniform-information>

Good Work Worship

We're pleased to invite you to your child's class, Good Work Worship.

They are held from 10 am-10.20 am in the school hall. We hope you can join us.

The dates up to the end of term/Easter Holiday are:

Inspirers – Tuesday 3rd March
Challengers – Tuesday 10th March
Adventurers – Tuesday 17th March
Inspectors – Tuesday 24th March

Imagineers - Wednesday 15th April

Community Food Hub

Our Community Shop Food To Go surprise bags are on sale on Tuesdays from 2.30pm.
A reminder will be sent out to let you know they are available.

Each bag costs £5 and can be purchased with cash (preferred) or card payment.

Please bring a large carrier bag if you can.

Please be aware that we have no control over the quality and quantity of items provided each week. With this in mind please note that prices may vary each week to reflect this.

Lunch Menus Update

After half term you will be able to choose the toppings for Jacket Potatoes and the sandwich fillings for the Grab Bags. If you have already ordered for after half term you can update your order on Arbor.

You can find the lunch menus for this term on our website via this link:
[School Lunches | St Johns C of E Primary School](#)

Hygiene at School

To help with hygiene within school, we are ensuring all classrooms have hand sanitiser for children to use, particularly when they return from the toilet, playtime, snack time and lunch times.

We hope you will join us in raising the profile of good hand hygiene and will talk to children at home about washing hands or sanitising regularly, both at home and at school.

Wraparound Care Price Increase

A reminder of Wraparound Care Fees:

Breakfast Session per day	£4.00
After school Session per day	£8.00
Late Collection (per 5 minutes)	£7.00



DIOCESE OF SOUTHWELL
& NOTTINGHAM
MULTI ACADEMY TRUST

St John's Journal

13th February 2026



ST JOHN'S
CHURCH OF ENGLAND ACADEMY



Year 1 (Imagineers) had a wonderful time on the trip to Lincoln Zoo! They saw a tiger, meerkats, otters, snakes, and lots of other exciting animals! Their favourites were the penguins; it was amazing to see the animal that we have learned so much about!

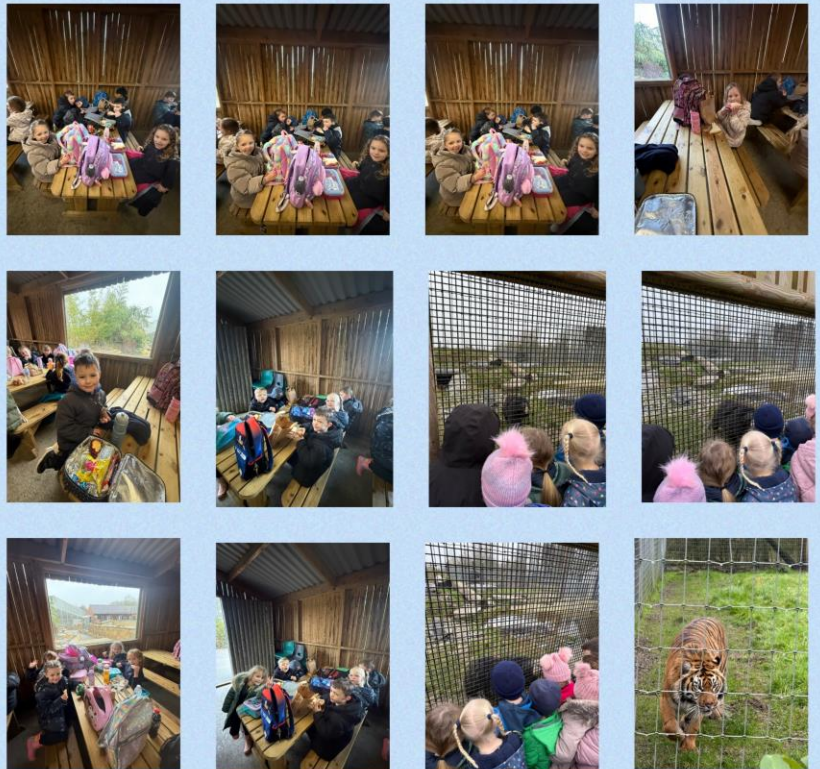




DIOCESE OF SOUTHWELL
& NOTTINGHAM
MULTI ACADEMY TRUST

St John's Journal

13th February 2026



St John's Journal

13th February 2026

Valentine's disco fun for Year 1!



Our EYFS crafters have been busy making adorable love bugs ready for Valentine's Day! The children carefully stuck heart-shaped paper together and added eyes, legs and antennae to bring them to life. Lots of fantastic fine motor skills, creativity and concentration on show — we're so proud of their beautiful creations!

Valentine's Love Bugs!





DIOCESE OF SOUTHWELL
& NOTTINGHAM
MULTI ACADEMY TRUST

St John's Journal

13th February 2026



ST JOHN'S
CHURCH OF ENGLAND ACADEMY



Curious Creators
loved
being creative this
week!



PIC•COLLAGE

What a fantastic final week
in Curious Creators before
the half term.



After the break, they will be
reading Jack and the
Beanstalk to begin their new
learning journey!



DIOCESE OF SOUTHWELL
& NOTTINGHAM
MULTI ACADEMY TRUST

St John's Journal

13th February 2026



ST JOHN'S
CHURCH OF ENGLAND ACADEMY



Our Valentine
Theme Day was a
huge success!





DIOCESE OF SOUTHWELL
& NOTTINGHAM
MULTI ACADEMY TRUST

St John's Journal

13th February 2026



ST JOHN'S
CHURCH OF ENGLAND ACADEMY



https://www.justgiving.com/page/hayley-wallace-1?utm_medium=FR&utm_source=CL



I'm excited to share that I'll be running the London Landmarks Half Marathon in support of DSUK, a charity that has meant a great deal to me and my family. Their work has made a real difference in our lives, and this is my way of giving something back.

If you're able to contribute, no matter the amount, I would be incredibly grateful. Your support truly means a lot.

Thank you so much for cheering me on and helping me support a cause close to my heart!

Miss Wallace



PT Family SENCo - Worksop Family of Schools

St Luke's CofE (Aided) Primary School, Worksop, Nottinghamshire, S81 8PW

Are you passionate about ensuring every child with special educational needs receives the support they deserve? The Worksop Family of Schools is seeking an experienced and dedicated Family SENCo to join our collaborative network of schools.

About the Role

The Family SENCo serves as the key liaison between individual schools and the Local Authority, coordinating resources, sharing expertise and ensuring consistent high-quality SEND provision across our large family of schools – 18 primary and 2 secondary schools.

<https://teaching-vacancies.service.gov.uk/jobs/pt-family-senco-worksop-family-of-schools>

The following snacks are available to children at morning break.
You will find the items to order on Arbor and the deadline for ordering is 3pm the day before.

Morning Snack



Pancakes (Contains Gluten, Wheat, Egg, Milk, May contain Nuts)	50p
Waffles (Contains Gluten, Wheat, Egg, Soya, Milk, May contain Nuts)	50p
Croissants (Contains Gluten, Wheat, Egg, Milk, May contain Nuts)	50p
Pain Au Chocolat (Contains Gluten, Wheat, Egg, Milk, Soya, May contain Nuts)	50p
Cheese & Onion Bake (Contains Milk, Gluten)	50p
Sausage Roll (Contains Gluten, Wheat, Egg, Milk)	50p
Toast (Contains Wheat, Soya) (Soya free bread is also offered)	35p

**ORDERS MUST BE PLACED BY 3PM
THE DAY BEFORE**

St John's Journal

13th February 2026


Missed a School Vaccine?

We've got you covered!



If you live in Nottingham or Nottinghamshire and have a school-aged child who has missed a vaccination you can make a free appointment for one of our catch up sessions.

Call Intrahealth on 0333 358 3397 option 4 followed by option 2



Monday 16th February 2026	10am-4pm	Hucknall Family Hub (Ashfield Family Hub) Broomhill Road, Nottingham NG15 6AJ
Monday 16th February 2026	10am-4pm	Chilwell Family Hub Great Hoggett Drive, Chilwell NG9 4HQ
Tuesday 17th February 2026	10am-4pm	Intrahealth Unit 2A East Bridgford Business Park, Kneeton Road, East Bridgford, NG13 8PJ
Tuesday 17th February 2026	10am-4pm	Retford Family Hub Spa Lane, Retford DN22 6EA (Car Park on New Street)
Wednesday 18th February 2026	10am-4pm	Arnbrook Family Hub Home Close, off Bestwood Lodge Dr, Arnold NG5 8NE
Thursday 19th February 2026	10am-4pm	Mansfield Woodhouse Family Hub Swan Ln, Mansfield Woodhouse, Mansfield NG19 8BT
Friday 20th February 2026	10am-4pm	Nottingham High School Waverley Mount, Nottingham, NG7 4ED

Scan the QR code for more information and a full list of clinics:



Key Dates for School Admissions



The following gives information about the key dates for the Nottinghamshire County Council coordinated scheme.

Offers are communicated through Nottinghamshire County Council's online system.
Further details here:

<https://www.nottinghamshire.gov.uk/education/school-admissions/hub>

	Open date	Close date	Offer date
Secondary	4 August 2025	31 October 2025	2 March 2026
Primary	3 November 2025	15 January 2026	16 April 2026

Foundation1 (Nursery)

The following gives information about the key dates for our published scheme for applications to Foundation 1 (Nursery), dealt with directly by the Academy. Offers are communicated via email.

Further details here:

<https://www.stjohnsworksop.co.uk/nurseryf1-curious-creators/>

Intake	Deadline for Applications	Offers Made
Spring Intake 2026 (January 2026)	W/E 28th June 2025	W/C 15th July 2025
Summer Intake 2026 (April 2026)	W/E 26th September 2025	W/C 13th October 2025
Autumn Intake 2026 (September 2026)	W/E 27th March 2026	W/C 20th April 2026
Spring Intake 2027 (January 2027)	W/E 26th June 2026	W/C 13th July 2027

Wellbeing Page

Handle With Care

We would like to provide all families with additional support during those times when things may be difficult at home. We understand it is not always easy to share details with school, especially at the classroom door and that's okay.

If your child is coming to school after a difficult night, morning or weekend; please message the school office with your child's name, class and "Handle With Care" and these will be passed staff members.

Nothing else will be said or asked but this will let us know that your child may need extra time, patience or help during the day.

At St John's we believe that everyone has the right to feel safe and be who they are. Our school is a place where everyone can feel safe and happy and we will always treat bullying seriously.

What is bullying?

Bullying is when someone hurts someone else, by using behaviour or words which are meant to frighten or hurt that person.

Several Times On Purpose

What should I do?
Ask them to stop if you can.
Ask them to go away.
Ignore them.
Walk away.
Get help.

Start Telling Other People

Who can I tell?
A friend, parents/carers, teachers, a trusted adult.



Young Carers Service

FREE

A support service to help identify and support Young Carers in education

- Advice on how to support Young Carers in Education
- Young Carer themed Assemblies
- Staff meetings & Inset training
- Young Carer Champion training
- Resources

NOTTINGHAMSHIRE CARERS ASSOCIATION

www.nottinghamshirecarers.co.uk
info@nottinghamshirecarers.co.uk
01773 833 833

Nottingham City Council | Nottinghamshire County Council | TüVida | ICS



DIOCESE OF SOUTHWELL
& NOTTINGHAM
MULTI ACADEMY TRUST

St John's Journal

13th February 2026



ST JOHN'S
CHURCH OF ENGLAND ACADEMY

TALK

P **A** **N** **T** **S**

AND STAY SAFE,
LIKE PANTOSAURUS

P PRIVATES ARE PRIVATE

A ALWAYS REMEMBER YOUR
BODY BELONGS TO YOU

N NO MEANS NO

T TALK ABOUT SECRETS
THAT UPSET YOU

S SPEAK UP, SOMEONE
CAN HELP

NSPCC

EVERY CHILDHOOD IS WORTH FIGHTING FOR



DIOCESE OF SOUTHWELL
& NOTTINGHAM
MULTI ACADEMY TRUST

St John's Journal

13th February 2026



ST JOHN'S
CHURCH OF ENGLAND ACADEMY

BRITISH VALUES AT ST JOHN'S C OF E ACADEMY

SERVING OUR COMMUNITY

WE STRIVE TO DEVELOP CLOSE LINKS WITH THE
COMMUNITY WE SERVE.



TOLERANCE & PEACE

WE LEARN ABOUT TOLERANCE AND
RESPECT FOR PEOPLE OF DIFFERENT
RELIGIONS AND CULTURAL
BACKGROUNDS SO WE CAN BE AT
PEACE IN OUR COMMUNITIES.

MUTUAL RESPECT

WE DISCUSS AND
APPRECIATE THE
DIFFERENCES BETWEEN
PEOPLE- FAITH, ETHNICITY,
GENDER, SEXUALITY, YOUNG
CARERS AND DISABILITY.



DEMOCRACY

WE LEARN ABOUT THE
IMPORTANCE OF FREEDOM
OF SPEECH, HOLD MOCK
ELECTIONS AND SPEAK TO OUR
MP AND LOCAL POLITICIANS.



INDIVIDUAL LIBERTY

WE PROVIDE
OPPORTUNITIES
TO DEVELOP
SELF-ESTEEM AND
CONFIDENCE AS
INDIVIDUALS ACROSS
THE CURRICULUM.



TRUTH & JUSTICE

WE HAVE AGREED RULES
AND EXPECTATIONS SO
THAT OUR SCHOOL IS A
SAFE AND HAPPY PLACE
FOR ALL AND WHERE
DIFFERENCES ARE
RECONCILED PEACEFULLY.



www.stjohns.ac.uk

Are You a Young Carer?

Would you like to travel on the tram or bus for **FREE**?



Aged 5 - 17? Contact Young Carers Notts to get a **FREE** travel card!



Tel: 0115 824 8824 (9am - 5pm, Mon- Fri)

WhatsApp: 07860 957 660

Email: youngcarers@tuvida.org

Web: www.youngcarersnotts.co.uk

**YOUNG
CARERS
NOTTS**



Funded by
UK Government



Nottinghamshire
County Council

Tü Vida
Supporting your life



DIOCESE OF SOUTHWELL
& NOTTINGHAM
MULTI ACADEMY TRUST

St John's Journal

13th February 2026



ST JOHN'S
CHURCH OF ENGLAND ACADEMY



Safeguarding for parents

What is safeguarding?

Safeguarding ensures that every child, regardless of their age, disability, gender reassignment, race, religion or belief, sex, or sexual orientation, has a right to equal protection from harm. It's the steps that people take to protect children and vulnerable people from harm.



Examples of safeguarding concerns to look out for:



Physical

A group of children pushing or hitting a smaller child when an adult isn't looking.



Emotional

A crying child running towards their parent who responds in a harsh manner using inappropriate language.



Sexual

A teenage girl walking home being catcalled and harassed, or being touched without consent.



Neglect

A child wearing the same dirty clothes every day and stealing food from other children.



How can you help?

If you ever see anything happen to a child that makes you feel uncomfortable, please let your safeguarding lead / person know. You're not causing problems - you could save a child from unnecessary harm.

Any one of these things might not mean anything, but if your safeguarding lead / person isn't told, they can't help.

Speak to:

Mr Rizzo, Mrs Godley or Mrs Thackery

Talk to me
about your
concerns

For more support with safeguarding, search

Tes safeguarding advice



Bassetlaw District Council is supporting Nottinghamshire Festival of Science and Curiosity by hosting a range of **FREE STEM** events in **RETFORD**

Bassetlaw Museum 16th to 20th of February

Monday 16th February

Drop-in activities **Maker {Futures} - University of Sheffield**
10am to 12noon & Create, tinker, test and get hands-on with playful 'STEP Forward' activities
1pm to 3pm that explore fusion, plasma, electricity, power and energy.
Designed for 7–12 year olds

Tuesday 17th & Wednesday 18th February

Drop-in activities **Science in Things - Trelleborg**
10am to 12noon & Exciting hands on STEM activities delivered by the Trelleborg Development
1pm to 3pm Scientists. Create your own Lava lamps, Magnetic slime, Mini rockets and
Cloud dough.

Thursday 19th February

Drop-in activities **Step into Cyber - University of Nottingham**
10am to 12noon & Confused by cryptography? Puzzled by passwords? Explore the world of
1pm to 3pm cyber security with insights into current research and future career paths.

Retro Games Revival - University of Nottingham
Video games have changed a lot over the last 50 years. Enjoy some blasts from the past on the hardware of the era, including Pac Man, Space Invaders, an Italian plumber and an infamous blue hedgehog.

Friday 20th February

Drop-in activities **LEGO Fun Day**
10am to 12noon & Join Bassetlaw Museum for their famous Lego day and let your imagination
1pm to 3pm run wild.

You can view the full catalogue of FOSAC events taking place across Bassetlaw at:

www.nottsfosac.co.uk





DIOCESE OF SOUTHWELL
& NOTTINGHAM
MULTI ACADEMY TRUST

St John's Journal

13th February 2026



ST JOHN'S
CHURCH OF ENGLAND ACADEMY

Electric blanket **FIRES** can be fatal!

Electric blankets cause countless fires each year, and at a recent Nottinghamshire County Council Trading Standards safety event, 68% of blankets brought into the event failed safety tests.

There are simple ways to stop a blanket causing a fire in your home. If your blanket (or its flex) shows any of these danger signs, you should have it checked or replaced:

- scorch marks
- fraying fabric
- exposed elements
- creasing or folding
- soiling
- damp patches
- tie tapes damaged or missing
- worn flex
- loose connections
- an old BEAB safety mark (round symbol) - this means it is more than 10 years old.



Avoid buying a second hand electric blanket and make sure any blanket you purchase displays the British or European standard and a safety certification mark.

Nottinghamshire County Council
Trading Standards

Electric Blanket Safety Testing Events

Unsafe electric mattress blankets can cause fires – have you ever had yours tested?

To book a **FREE** safety test appointment
phone: **0115 804 4555**

16th March 2026

Worksop Library



Any electric mattress blanket that is brought to us and fails electrical safety testing will be replaced on the day with a new electric mattress blanket. You will not receive your unsafe blanket back – it will be disposed of accordingly.

The blankets that we have available as replacements are of a standard specification and we do not have any other types in stock. **Please ensure you are happy to receive this blanket in exchange for your old blanket if it is found to be unsafe.**

**Please remember to bring the power cable for the blanket with you to the event*





Benefit Calculation Drop-in Sessions

No appointment necessary!

Drop into our Worksop office between **9:30am-2:30pm**
on the last Thursday of every month and find out
whether there are benefits you may be entitled to.

Citizens Advice North Nottinghamshire
100 - 102 Bridge Street
Worksop
S80 1HZ



North
Nottinghamshire

 0300 561 2800

 advice@canns.org.uk

 www.canns.org.uk

Are you looking for financial or wellbeing support?

We are here to support young people and their parents with help and advice on a wide range of topics

- ✓ Benefit eligibility checks
- ✓ Wellbeing Support
- ✓ Debt Advice
- ✓ Energy bills
- ✓ Private Housing Assistance

 No appointment needed - just drop in!

 Thursday 5th March 2026
9:00am - 4:00pm

 The Crossing Church
Newcastle Street
Worksop
S80 2AT

 citizens advice North Nottinghamshire

